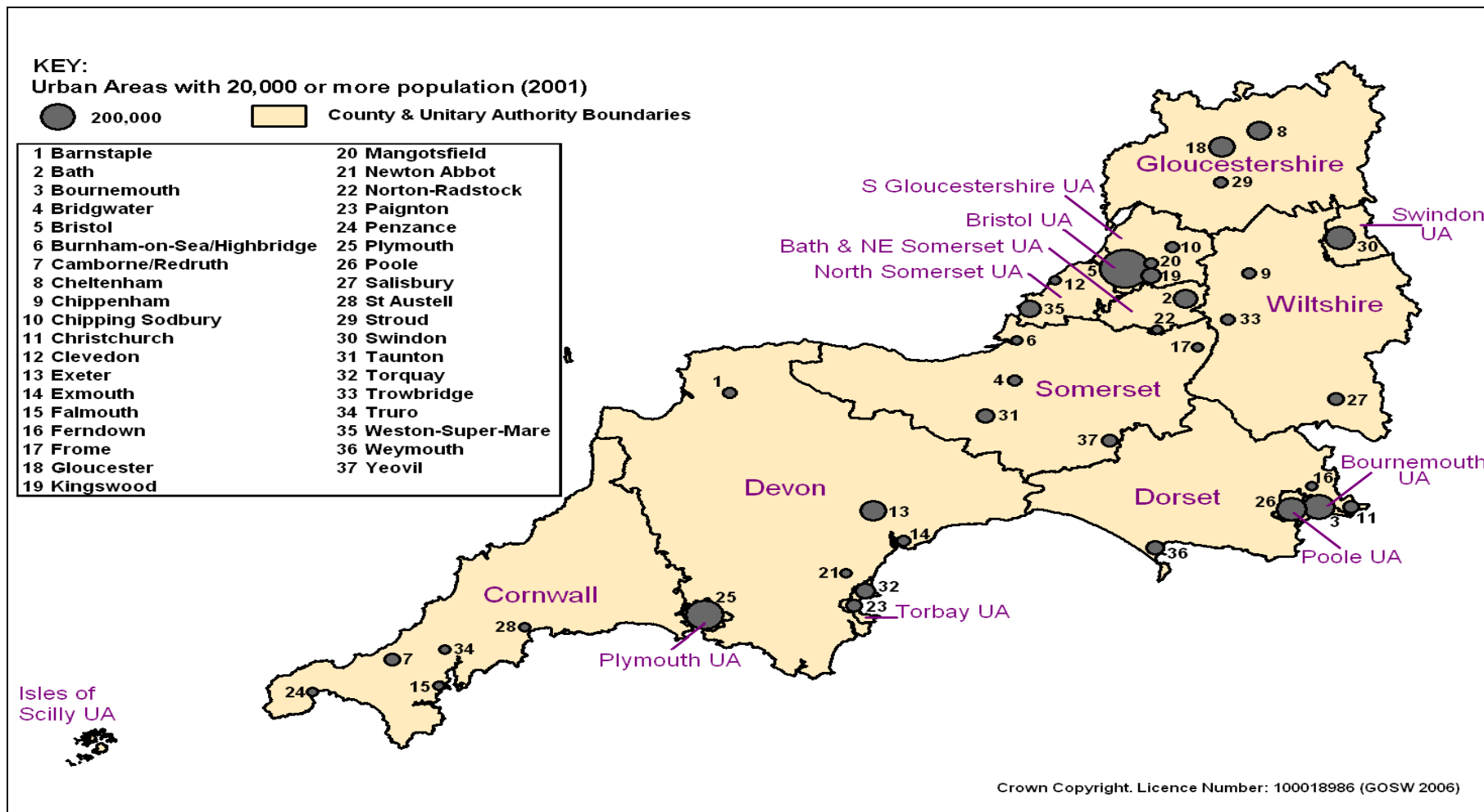
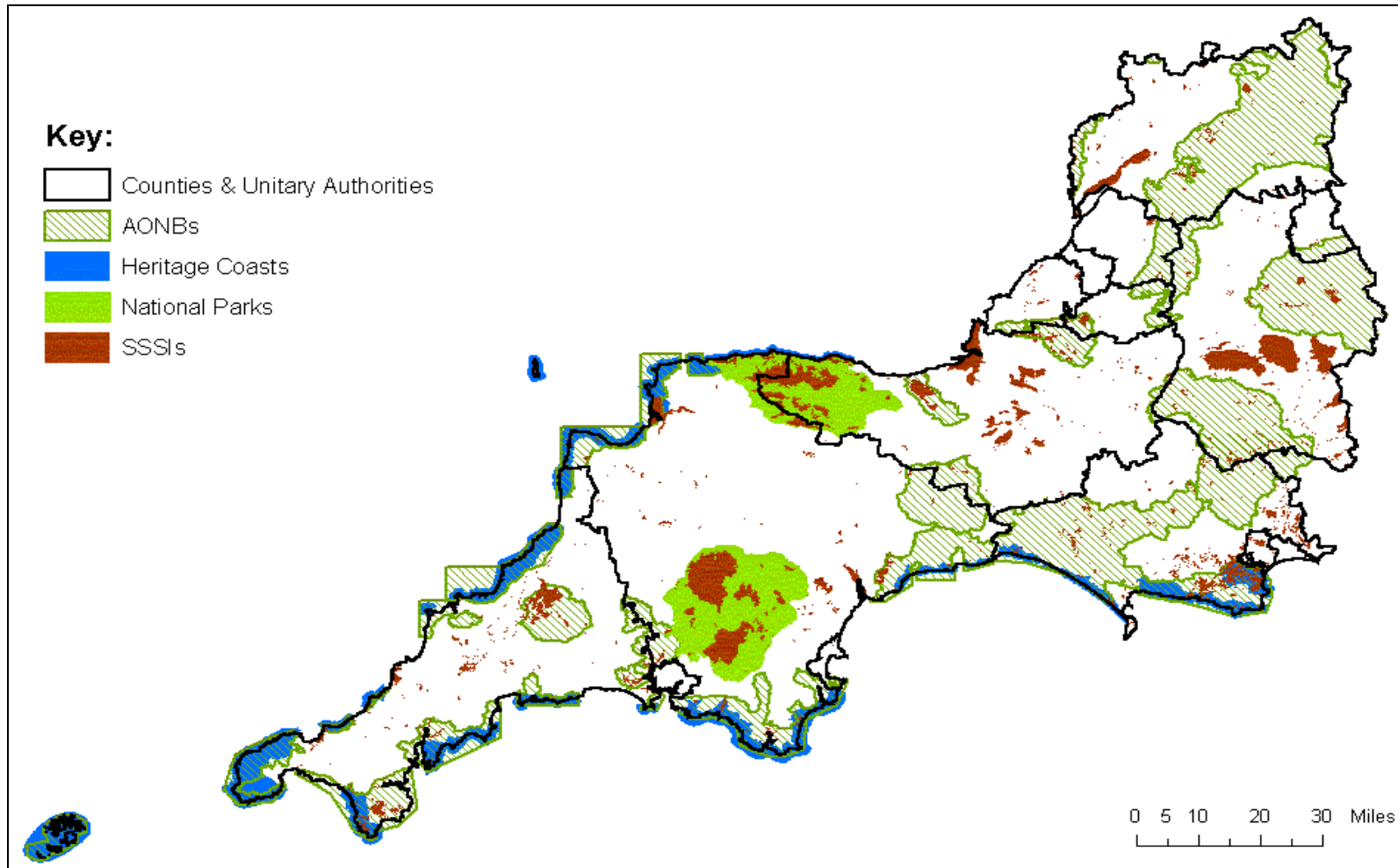


## The South West – The regional context

### Main Towns and Cities



## Physical Environment



- The South West has the **largest area** of the 9 English regions (23,837 sq km – more than 18% of England).
- The South West peninsula extends over 350 km from the south-western tip of Cornwall to the northern border of Gloucestershire and the eastern borders of Dorset and Wiltshire and has extremely varied geology and topography.
- Even though the distance is slightly further, it takes almost an hour less to travel by car from the north of the region to Scotland than it does to travel from the north of the region to the tip of Cornwall.
- The region has the highest percentage of **rural land** of any English region, with around three quarters of the total land area being part of an agricultural holding.
- The South West has over 60% of England's **heritage coast**. Almost a third of the region is within an '**Area of Outstanding Natural Beauty**' and the two **National Parks** of Dartmoor and Exmoor make up 7% of the land area. The South West is also home to the **World Heritage Sites** of Stonehenge and Avebury, the city of Bath and the Jurassic Coast in Dorset.

## Population

- The South West has a **total population** of just over 5 million (around 10% of the English total).
- It has the lowest **population density** of any English region (211 persons per sq km - the English population density is 385 persons per sq km). There is a great variation in population density across the region, ranging from Bristol, (3581 persons per sq km) to West Devon district (43 persons per sq km).
- Between 1984 and 2004 the South West had the **fastest growing population** of any English region (12.9%), almost twice England's 6.8% growth over the same period. The population increase is largely due to people moving into the region.
- A higher percentage of the population of the South West lives in **rural districts** than in any other English region (about 56%). These 31 districts have seen a higher recent rate of population growth than the region's 14 urban districts, increasing by over 17% between 1984 and 2004, more than twice the percentage rise for SW urban districts (8%).
- The South West has the lowest percentage of people living in **urban settlements** of any English region (67%, England as a whole 82%). It has the most people (and highest percentage of people) living in **villages, hamlets or isolated dwellings** (17%, Eng. 8%) and in **remote locations** (4%, Eng. 1%).
- The **main urban areas** in the South West are Bristol, Bournemouth & Poole, Plymouth, Swindon, Gloucester, Torbay, Cheltenham and Exeter. These 8 areas include more than a third of the region's population. Bristol Urban Area has a population of more than half a million people and is the 9th largest urban area by population in England & Wales. The Bournemouth Urban Area (which includes Poole and Christchurch) is the 13th largest.
- According to ONS projections, the population of the South West is **expected to grow** by almost half a million people between 2003 and 2018 and by another 325,000 by 2028.

## Age Breakdown

- Of the 9 English regions, the South West has the highest percentage of people of **retirement age** and above. (21.7%, Eng. 18.5% - *M65/F60 plus*) Dorset county and Torbay both have more than a quarter of their population of retirement age and above.
- The region has a smaller proportion of **working age people** than England as a whole (59.9% compared to 62.0%) although Bristol, Swindon and Plymouth all have a higher percentage than nationally.
- 18.5% of the region's population is **15 and under**, less than for England as a whole (19.5%).

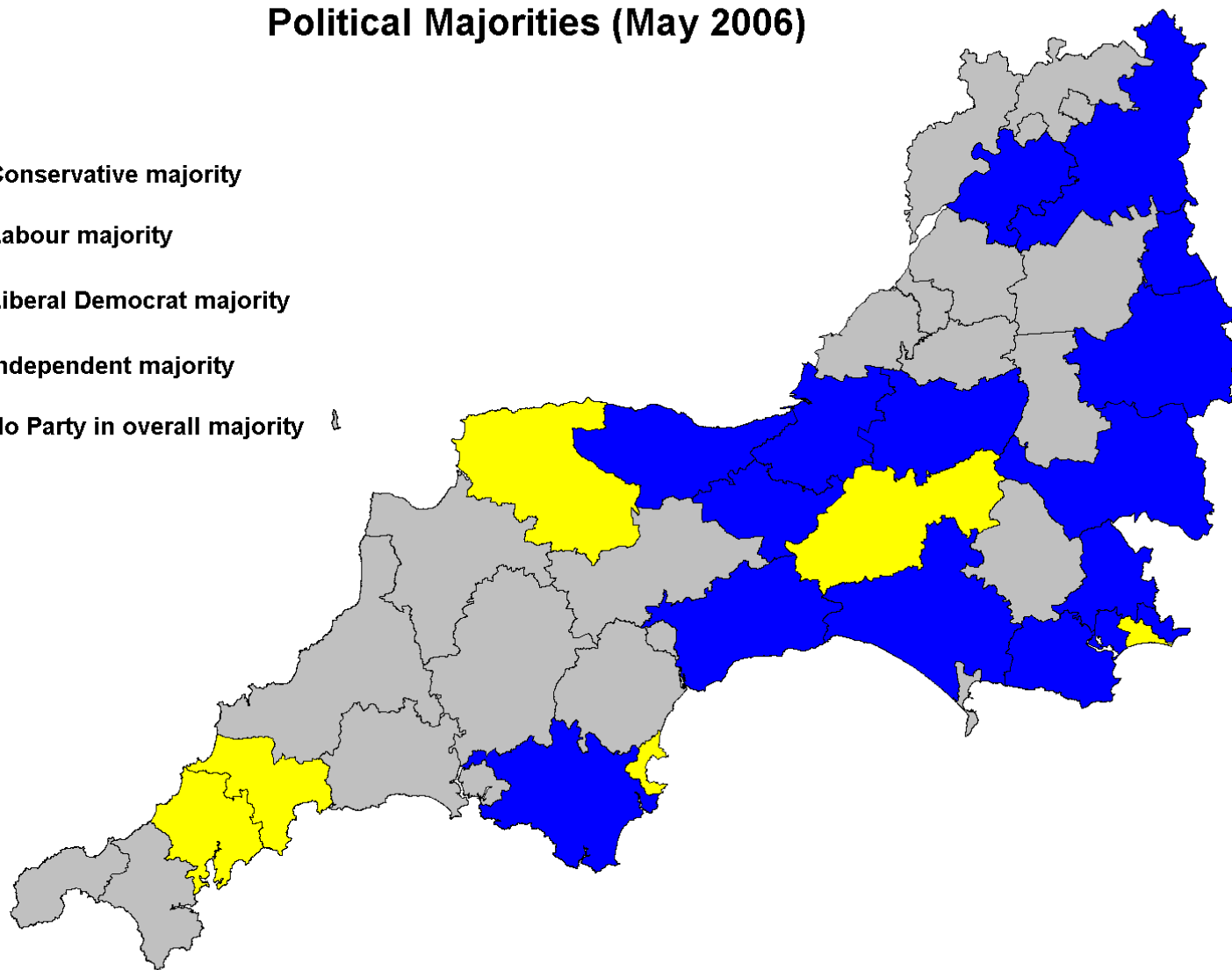
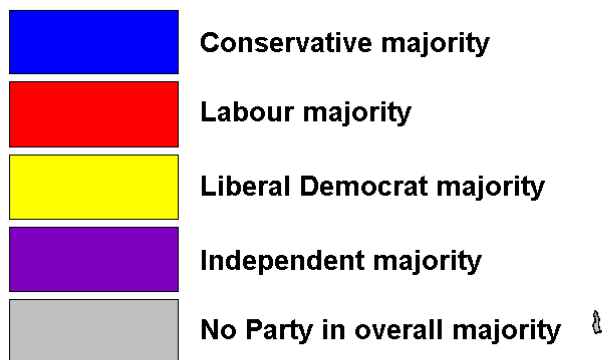
## Ethnicity

- The **non-white ethnic minority population** is low in the South West with none of the region's 45 local authorities having a larger ethnic minority than England as a whole (9.1%, SW 2.4%).
- Only Bristol (8.2%) and Gloucester (7.5%) have more than a twentieth of their population with a non-white ethnicity.

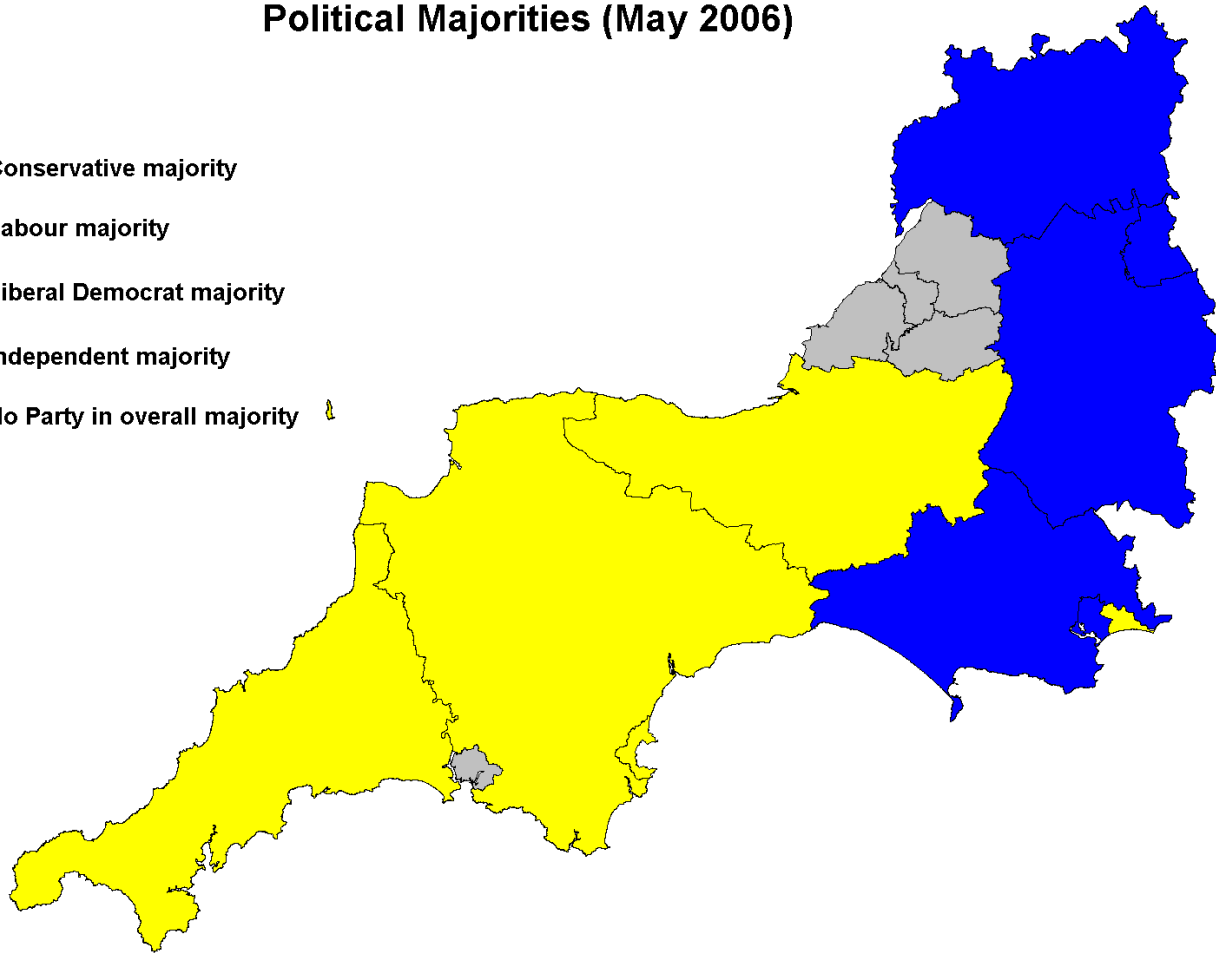
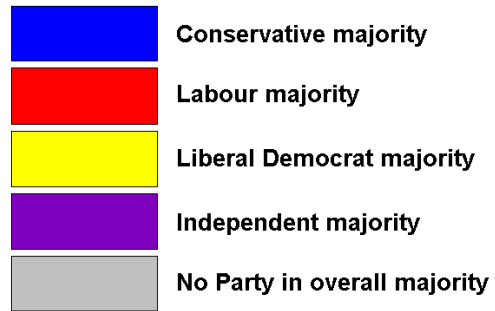
## Local Government and Politics

- In the South West there are 10 Unitary Authorities and 6 County **Councils**. The latter contain 35 District Councils. There are 8 Fire and Rescue Authorities in the SW.
- About half of these Councils have no overall control, while most of the rest are Conservative or Liberal Democrat led.
- Most of the main population centres are within unitary authorities, but both district and county councils serve some, for example Gloucester, Cheltenham and Exeter.
- There are 51 South West **Parliamentary Constituencies** and the three main parties each have more than a quarter of the MPs (22 Conservative, 16 Liberal Democrat and 13 Labour).
- The region is represented by 7 **MEPs** (3 Conservative, 2 UK Independence, 1 Labour and 1 Liberal Democrat).

## South West Unitary and District Councils: Political Majorities (May 2006)



## South West County and Unitary Councils: Political Majorities (May 2006)



## Comprehensive Performance Assessment

The following tables summarise performance in the SW in the context of CPA

Authority	LA type	Direction of travel	Star category	Corp assessment	Use of resources	Children & young people	Social care (adults)	Housing	Env	Culture	Benefits
Bristol	Unitary Authorities	Improving Adequately	1 star	2	2	2	2	2	2	1	3
Swindon	Unitary Authorities	Improving Well	2 stars	2	2	2	2	2	2	3	3
Isles of Scilly	Unitary Authorities	Not Improving Adequately	1 star	3	1	2	2	2	1	3	3
North Somerset	Unitary Authorities	Improving Well	2 stars	2	2	3	3	3	2	2	4
Plymouth	Unitary Authorities	Improving Adequately	2 stars	2	2	2	2	3	2	2	4
Torbay	Unitary Authorities	Improving Adequately	2 stars	2	2	2	2	3	2	4	3
Bath & N E Somerset	Unitary Authorities	Improving Adequately	3 stars	3	2	3	2	3	2	3	3
Bournemouth	Unitary Authorities	Improving Adequately	3 stars	2	3	3	3	3	2	4	3
Poole	Unitary Authorities	Improving Well	3 stars	3	2	3	3	3	2	4	3
Cornwall	County Councils	Subject to review	3 stars	3	3	3	3	n/a	2	3	n/a
Dorset	County Councils	Improving Well	3 stars	3	3	3	2	n/a	2	4	n/a
Gloucestershire	County Councils	Improving Well	3 stars	3	3	3	2	n/a	2	2	n/a
Somerset	County Councils	Improving Well	3 stars	2	3	3	4	n/a	2	4	n/a

Authority	LA type	Direction of travel	Star category	Corp assessment	Use of resources	Children & young people	Social care (adults)	Housing	Env	Culture	Benefits
South Gloucestershire	Unitary Authorities	Improving Well	3 stars	3	3	3	2	3	2	3	3
Wiltshire	County Councils	Improving Strongly	3 stars	3	2	3	3	n/a	4	3	n/a
Devon	County Councils	Improving Well	4 stars	3	3	3	3	n/a	3	4	n/a

In the South West, eight of the region's 16 single tier and county councils are rated as 'improving well' and five are judged to be 'improving adequately'. Wiltshire County Council is the only authority to achieve the top rating of 'improving strongly', and the Isles of Scilly the only one to be assessed as 'not improving adequately'.

In the star ratings of overall performance, one council – Devon - has achieved the top category of 4 stars. Nine councils have been awarded 3 stars, and four have received a 2 star rating. Bristol and the Isles of Scilly are two of nine councils nationwide with a 1 star rating.

Nationally, the Audit Commission's annual assessment of local councils shows 70 per cent are improving strongly or well. Fewer councils than ever before are in the lowest two CPA categories but still ten councils are failing to deliver services of an adequate standard.

Across England, two thirds of councils have achieved the top two categories of 3 or 4 star performance. However, ten councils are failing to deliver services of an acceptable standard, achieving only 1 or 0 stars at all. Across the country at least half of the councils in every region are either 'improving strongly' or 'improving well'.



**The national CPA picture and SW comparison – County and Unitary authorities direction of travel by region**

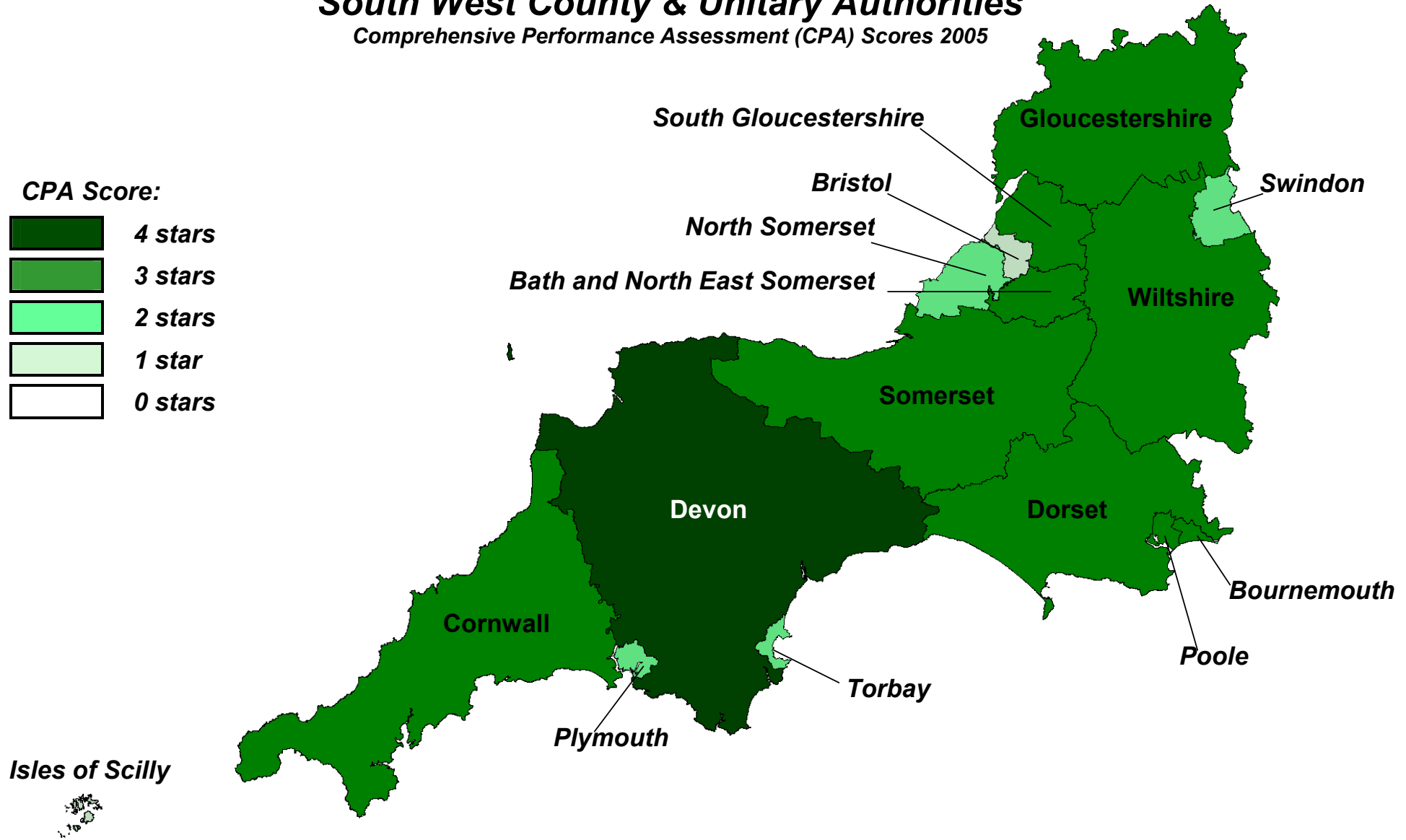
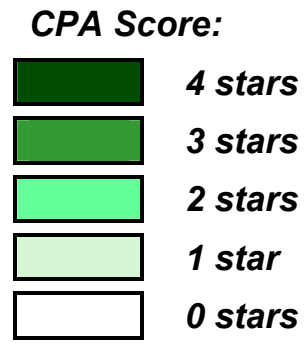
	<b>Number of Councils</b>	<b>Improving Strongly</b>	<b>Improving well</b>	<b>Improving adequately</b>	<b>Not Improving adequately</b>	<b>Subject to review</b>
East Midlands	9	1	5	3	0	0
East of Eng	10	0	7	3	0	0
London	33	2	26	3	0	2
North East	12	0	11	0	0	1
North West	22	0	15	5	0	2
South East	19	1	12	6	0	0
South West	16	1 (6%)	8 (50%)	5 (31%)	1 (6%)	1 (6%)
West Midlands	14	1	8	3	0	2
Y & H	15	2	6	3	1	1
Total	150	8 (5%)	98 (65%)	33 (22%)	2 (1.3%)	9 (6%)

### The national CPA picture and SW comparison - star category by region

	Number of Councils	4 star	3 star	2 star	1 star	0 star	Subject to review
East Midlands	9	3	2	4	0	0	0
East of England	10	2	4	3	1	0	0
London	33	7	16	7	3	0	0
North East	12	7	4	1	0	0	0
North West	22	8	3	9	1	0	1
South East	19	4	12	3	0	0	0
South West	16	1 (6%)	9 (56%)	4 (25%)	2 (13%)	0	0
West Midlands	14	3	6	2	1	0	2
Yorks and Humber	15	2	9	1	1	1	1
Total	150	37 (26%)	65 (43%)	34 (23%)	9 (6%)		4 (2%)

# South West County & Unitary Authorities

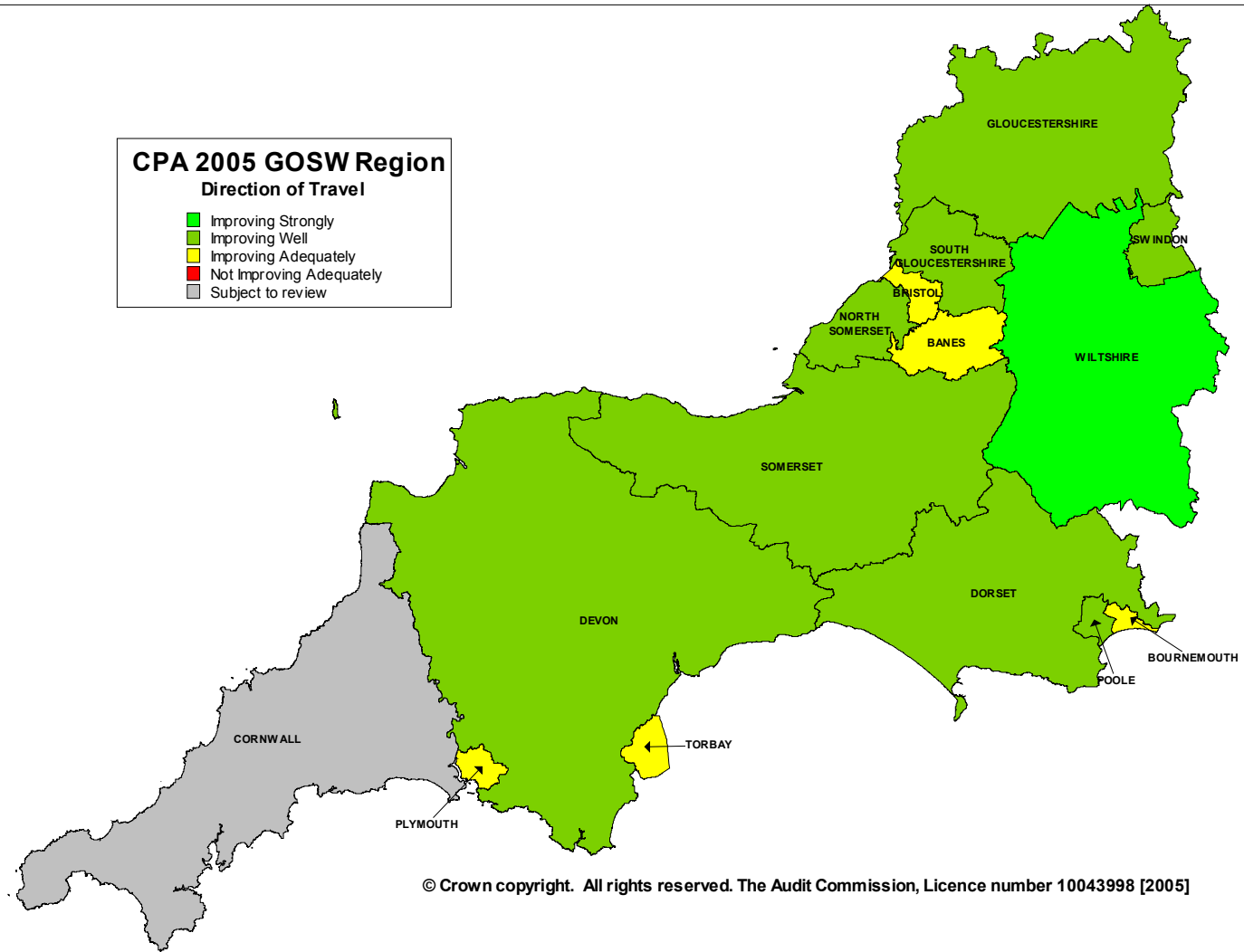
Comprehensive Performance Assessment (CPA) Scores 2005



### CPA 2005 GOSW Region

#### Direction of Travel

- Improving Strongly
- Improving Well
- Improving Adequately
- Not Improving Adequately
- Subject to review



© Crown copyright. All rights reserved. The Audit Commission, Licence number 10043998 [2005]

## SW DISTRICT COUNCILS ANALYSIS OF CPA SCORES

District	County	Date Released	Overall Score	Score Sort	Ambition	Prioritisation	Focus	Capacity	Perf Mgt	Achievement in quality of service	Achievement of Improvement	Investment	Learning	Future Plans
Caradon	Cornwall	Oct-04	Fair	3	2	3	3	2	2	3	3	3	2	2
Carrick	Cornwall	Oct-04	Good	4	2	3	3	3	3	3	3	4	3	3
Kerrier	Cornwall	Oct-04	Fair	3	2	2	3	3	2	2	3	4	4	2
N.Cornwall	Cornwall	Oct-04	Excellent	5	2	3	4	4	3	3	3	4	4	2
Penwith	Cornwall	Oct-04	Good	4	2	2	2	3	3	3	4	3	3	2
Restormel	Cornwall	Oct-04	Fair	3	2	2	2	2	2	2	3	3	3	2
East Devon	Devon	Oct-03	Good	4	3	2	3	3	2	3	3	3	3	3
Exeter	Devon	Oct-03	Excellent	5	4	4	3	3	3	3	3	3	4	4
Mid Devon	Devon	Feb-04	Weak	2	2	2	2	2	1	3	2	3	2	1
North Devon	Devon	Oct-03	Weak	2	2	1	2	1	2	3	3	2	2	2
South Hams	Devon	Oct-03	Excellent	5	4	4	4	3	4	3	3	4	4	3
District	County	Date Released	Overall Score	Score Sort	Ambition	Prioritisation	Focus	Capacity	Perf Mgt	Achievement in quality of service	Achievement of Improvement	Investment	Learning	Future Plans



Teignbridge	Devon	Oct-03	Good	4	2	2	2	3	3	3	3	4	3	3
Torrige	Devon	Oct-03	Poor	1	1	1	1	1	1	3	1	2	1	2
West Devon	Devon	Oct-03	Good	4	2	2	3	3	3	3	3	3	3	2
Christchurch	Dorset	Jun-04	Fair	3	2	3	3	2	2	2	3	3	3	3
East Dorset	Dorset	Jun-04	Good	4	2	2	3	4	2	3	3	3	3	3
North Dorset	Dorset	Jun-04	Weak	2	2	1	2	2	1	2	2	3	3	2
Purbeck	Dorset	Jun-04	Fair	3	2	2	3	3	2	3	2	3	2	2
West Dorset	Dorset	Jun-04	Fair	3	3	3	2	2	3	3	2	4	3	2
Wey & Port	Dorset	Jun-04	Weak	2	3	3	2	2	1	2	2	3	3	3
Cheltenham	Glos	Oct-04	Good	4	2	3	2	2	2	3	4	3	3	2
Cotswold	Glos	Oct-04	Good	4	2	3	3	3	2	3	3	3	3	2
Forest of Dean	Glos	Oct-04	Weak	2	2	3	2	2	1	2	2	3	2	2
Gloucester	Glos	Oct-04	Fair	3	3	3	2	2	2	2	2	3	3	3
Stroud	Glos	Oct-04	Good	4	4	3	2	3	2	3	3	3	2	3
<b>District</b>	<b>County</b>	<b>Date Released</b>	<b>Overall Score</b>	<b>Score Sort</b>	<b>Ambition</b>	<b>Prioritisation</b>	<b>Focus</b>	<b>Capacity</b>	<b>Perf Mgt</b>	<b>Achievement in quality of service</b>	<b>Achievement of Improvement</b>	<b>Investment</b>	<b>Learning</b>	<b>Future Plans</b>

Tewkesbury	Glos	Oct-04	Fair	3	3	1	2	2	2	3	3	3	3	2
Mendip	Somerset	Sep-04	Weak	2	2	2	3	1	2	2	3	2	2	2
Sedgemoor	Somerset	Sep-04	Fair	3	2	1	2	3	2	2	3	3	3	2
South Somerset	Somerset	Sep-04	Fair	3	2	3	2	2	2	3	3	3	2	3
Taunton Deane	Somerset	Sep-04	Excellent	5	4	3	3	3	3	3	4	3	2	3
West Somerset	Somerset	Sep-04	Weak	2	3	1	2	2	1	2	2	2	2	3
Kennet	Wilts	May-04	Good	4	2	2	3	3	3	3	3	3	2	3
North Wiltshire	Wilts	Jul-04	Fair	3	2	3	3	3	2	2	3	4	3	2
Salisbury	Wilts	May-04	Good	4	4	3	4	2	3	3	3	3	3	2
West Wiltshire	Wilts	May-04	Fair	3	1	2	3	3	2	2	3	3	4	3

### Fire and Rescue Authorities and CPA

Authority	Assessment
Avon	Fair
Cornwall	Fair
Devon	Good
Dorset	Good
Gloucestershire	Good
Somerset	Fair
Wiltshire	Weak